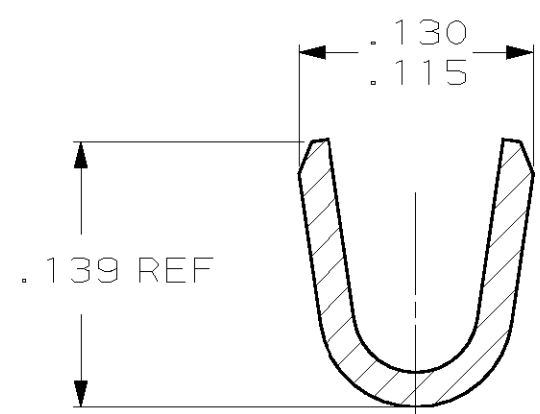
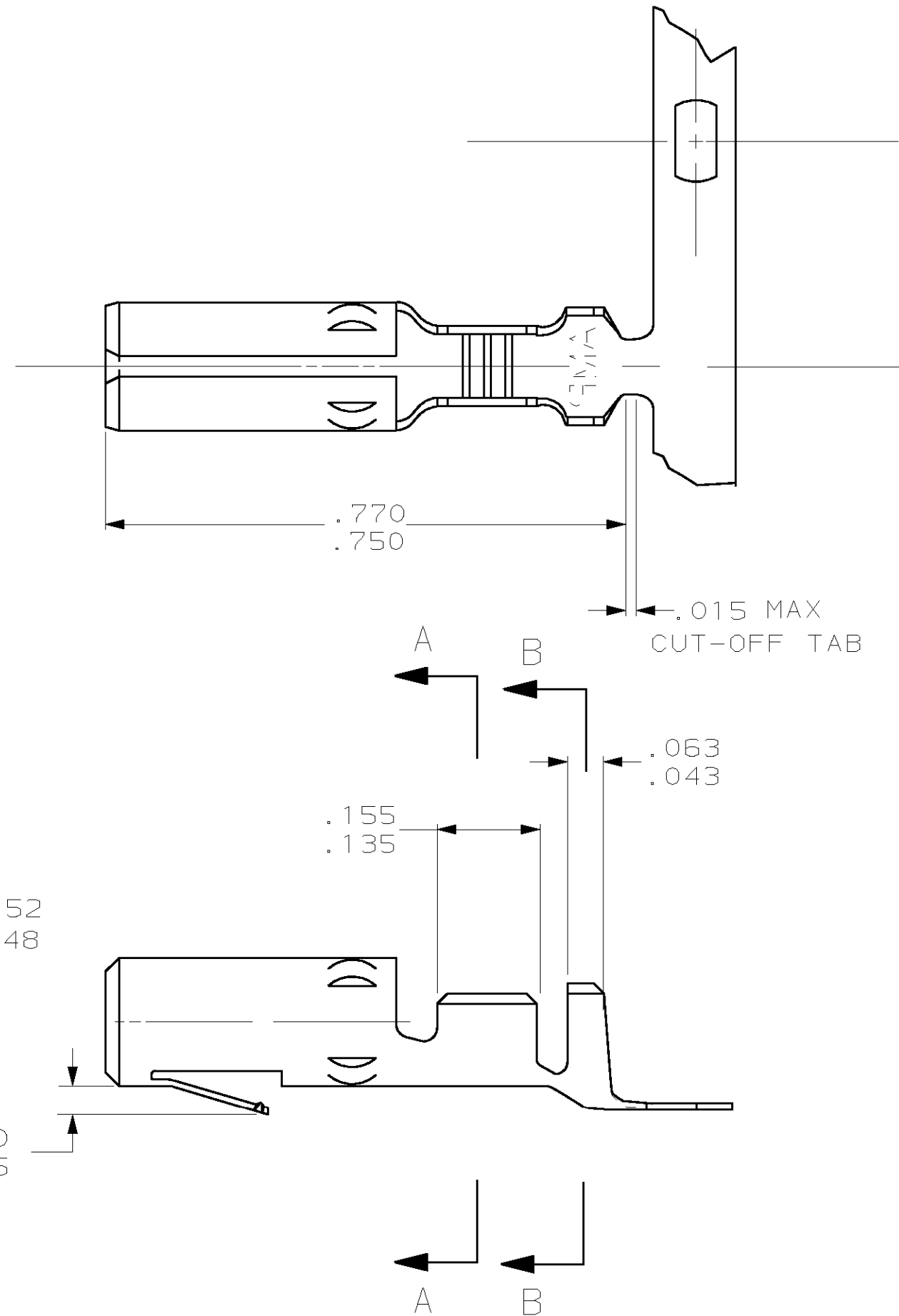


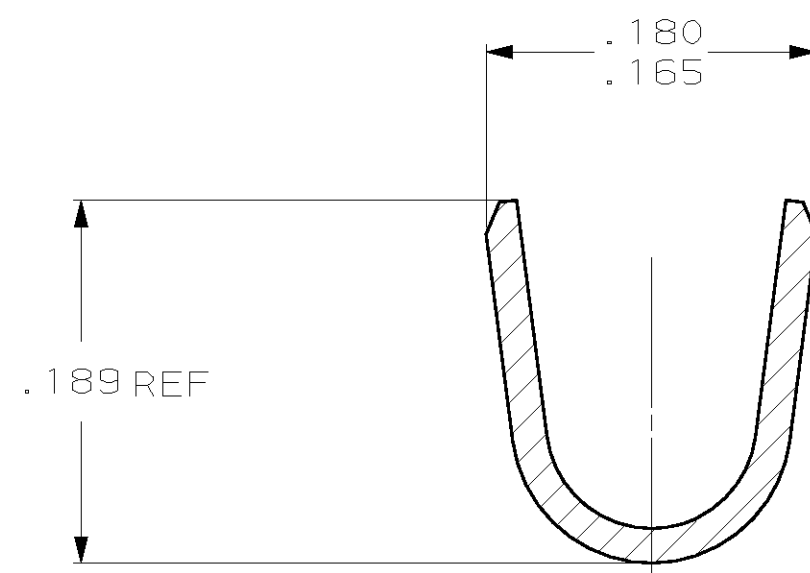
THIS DRAWING IS UNPUBLISHED. RELEASED FOR PUBLICATION .19  
 BY AMP INCORPORATED. ALL RIGHTS RESERVED.

| LOC | DIST | REVISIONS   |                             |           |       |
|-----|------|-------------|-----------------------------|-----------|-------|
| P   | LTR  | DESCRIPTION | DATE                        | DWN       | APVD  |
| CM  | 53   | S           | REVISED PER EC 063B-0079-00 | 21-FEB-00 | KW SR |

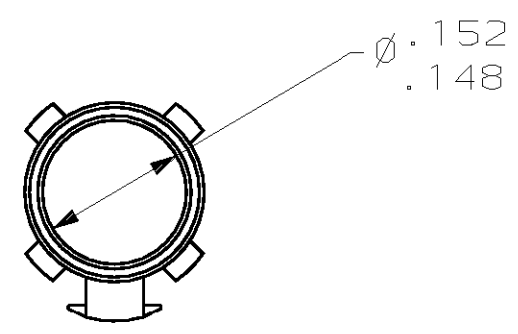
1. WIRE RANGE: 20-14 AWG (0.5-2MM<sup>2</sup>).  
 INSULATION RANGE: .125 MAX.



SECTION A-A  
SCALE 10:1



SECTION B-B  
SCALE 10:1



|             |        |             |         |
|-------------|--------|-------------|---------|
| PRELIMINARY | TIN    | .018 PH BRZ | 61085-3 |
|             | TIN    | .018 BRASS  | 61085-1 |
|             | FINISH | MATERIAL    | PART NO |

| IN   | MM   | IN   | MM   | IN   | MM   | IN   | MM    |
|------|------|------|------|------|------|------|-------|
| .050 | 1.27 | .139 | 3.53 | .180 | 4.57 | -    | -     |
| .043 | 1.09 | .135 | 3.43 | .165 | 4.19 | -    | -     |
| .035 | 0.89 | .130 | 3.30 | .156 | 3.96 | -    | -     |
| .018 | 0.46 | .125 | 3.18 | .155 | 3.94 | .770 | 19.56 |
| .015 | 0.38 | .115 | 2.92 | .152 | 3.86 | .750 | 19.05 |
| .005 | 0.13 | .063 | 1.60 | .148 | 3.76 | .189 | 4.80  |
| IN   | MM   | IN   | MM   | IN   | MM   | IN   | MM    |

CONVERSION TABLE

**METRIC**

THIS DRAWING IS A CONTROLLED DOCUMENT FOR AMP INCORPORATED. IT IS SUBJECT TO CHANGE AND THE CONTROLLING ENGINEERING ORGANIZATION SHOULD BE CONTACTED FOR THE LATEST REVISION.

|             |  |                  |            |          |  |
|-------------|--|------------------|------------|----------|--|
| DIMENSIONS: | TOLERANCES UNLESS OTHERWISE SPECIFIED: | DWN              | J. HUFFMAN | 12-07-95 | <b>AMP</b> AMP Incorporated<br>Harrisburg, PA 17105-3608 |
| mm (INCHES) |  | CHK              | R. SWING   | 12-07-95 |  |
|             |  | APVD             | C. MARTIN  | 12-07-95 |  |
|             |  | PRODUCT SPEC     |            |          |  |
| MATERIAL    | FINISH                                 | APPLIC           |            |          | NAME   |
|             |  | WEIGHT           |            |          | SOCKET,<br>.156 MATE-N-LOK™                              |
|             |  | CUSTOMER DRAWING |            |          | SIZE   |
|             |  |                  |            |          | A2   |
|             |  |                  |            |          | CAGE CODE  |
|             |  |                  |            |          | 00779  |
|             |  |                  |            |          | DRAWING NO   |
|             |  |                  |            |          | C-61085  |
|             |  |                  |            |          | SCALE  |
|             |  |                  |            |          | 5:1  |
|             |  |                  |            |          | SHEET  |
|             |  |                  |            |          | 1 OF 1   |
|             |  |                  |            |          | REV  |
|             |  |                  |            |          | 5  |